






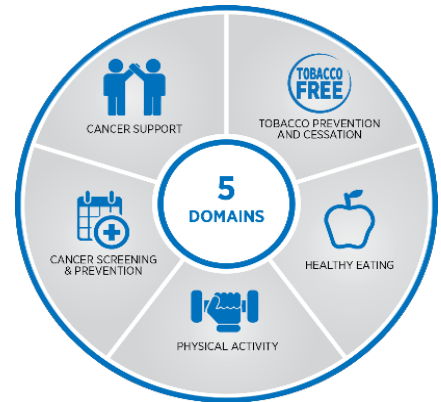
# Health Index for Employers™

**Cancer is the #1 cause of premature death** in the U.S. working-age population between ages 20-65 and the prevalence of cancer is increasing as the population ages. It is important to address chronic disease and cancer holistically from prevention and early detection through treatment and support.

The **Health Index for Employers™** initiative by the American Cancer Society helps business leaders to address the economic and social impacts of cancer in the workplace.

## Signature Features

-  A value-on-investment focus for effective use of employer effort and dollars.
-  Complementary to existing health or wellness programs.
-  Employers set measurable annual targets using evidence-based solutions.



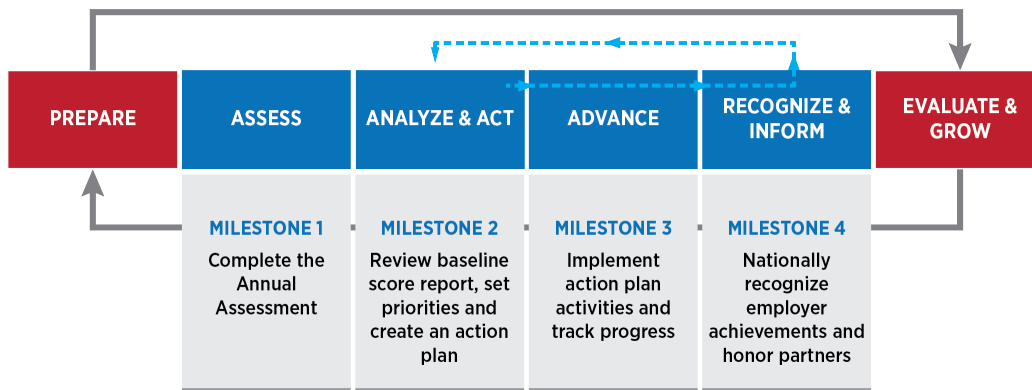
## The Core Initiative

The **Health Index for Employers™** covers 5 health domains in the workplace, including cancer screening and prevention, healthy eating, physical activity, cancer support, and tobacco cessation. The index includes the following features and employer benefits:

- An initial employer assessment to **establish a baseline of performance**
- Use of evidence-based solutions to **support low-risk improvements**
- An annual employer assessment to **measure new progress accurately**
- A national awards program to **recognize employer achievements**



The **Annual Improvement Cycle** encourages continuous improvement and program sustainability.



## Resources for Assessment, Implementation, and Feedback



**Initial baseline assessment** identifies improvement targets



**Score reports** provide feedback on progress and outcomes



**Proven evidence-based solutions** are low-risk and known to work



**Action plan templates and examples** guide implementation



**Annual cycle** encourages sustainable, continuous improvement

## Benefits for Employers and Employees

The **Health Index for Employers™** initiative helps both employers and employees by:

- Positioning the business as a shared value partner
- Helping with management of health care costs and enabling access to quality care
- Improving the health and productivity of employees with evidence-based practices
- Contributing to attraction and retention of talent
- Building visibility of current wellness programs
- Helping to create a thriving environment for growth

**For information about the American Cancer Society Health Index for Employers™ initiative, contact:**  
Gayle Bagley, Director, Employer Health & Wellbeing Initiatives – [ACSHealthIndex@cancer.org](mailto:ACSHealthIndex@cancer.org)